

7. SAFETY

MAINTENANCE. Make sure the coolant pump is turned off and disconnect from the main power supply before any inspection, adjustment or maintenance is carried out. The coolant tank filter should be cleaned on a regular basis to keep the pump free from being blocked. Replace nozzles, hoses & pump when they become worn. Check the system for any leaks,

UNDERSTAND THE UNIT CONTROLS. Make sure you understand the use and operation of all controls.

POWER OUTAGE. In the event of a power failure during use of this unit, turn off all switches to avoid possible sudden start up once power is restored.

HAND PROTECTION. It is recommended to wear correct safety gloves when cleaning this unit

MAINTAIN POWER CORDS. When disconnecting cord connected units from power, grab and pull the plug—NOT the cord. Pulling the cord may damage the wires inside. Do not handle cord/plug with wet hands. Avoid cord damage by keeping it away from heated surfaces, high traffic areas, harsh chemicals, and wet/damp locations

CHECK DAMAGED PARTS. Regularly inspect the unit for any condition that may affect safe operation. Immediately repair or replace damaged or mis-adjusted parts before operating the unit.

DISPOSAL OF WASTE CUTTING FLUID

Always dispose of the waste cutting fluid in a responsible way. If you are not sure of the method then contact your coolant supplier or read the MSDS fact sheet for your fluid.

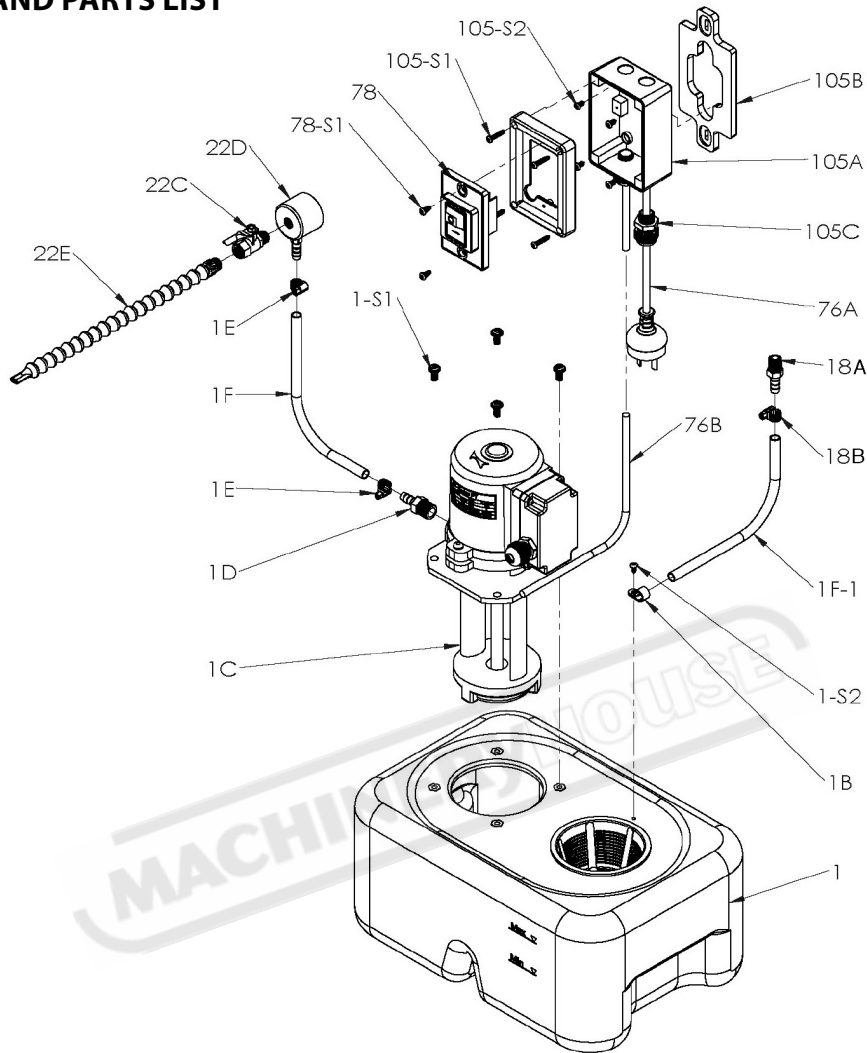
SPARE PARTS SECTION

The following section covers the spare parts diagrams and lists that were current at the time this manual was originally printed. Due to continuous improvements of the machine, changes may be made at any time without notification.

HOW TO ORDER SPARE PARTS

1. Have your machines **model number, serial number & date of manufacture** on hand, these can be found on the specification plate mounted on the machine
2. A scanned copy of your parts list/diagram with required spare part/s identified
3. Go to www.machineryhouse.com.au/contactus and fill out the inquiry form attaching a copy of scanned parts list.

8.DRAWING AND PARTS LIST



No.	Component	Rating	Pcs.
1	PVC Tank	10Litre	1
1B	Connector	1/2"	1
1C	Pump Motor	8150/240V 1Ph	1
1D	Adapter	PT3/8x5/16	1
1E	Clamp	1/2"	2
1F	Hose	5/16 x 1900mm	1
1F-1	Hose	1/2" x 1540mm	1
1-S1	Screw	1/4 x 1/2	4
1-S2	Screw	St 4 x L10	1
18A	Adapter	PT3/8 x 1/2"	1
18B	Clamp	3/4"	1
22C	Valve	1/4 x 1/4	1
22D	Magnetic Base	Ø40x1/4x5/16	1

No.	Component	Rating	Pce
22E	Nozzle	1/4" x 19P	1
76A	Wire	0.75x3Cx3M	1
76B	Motor Wire	0.75x3cx2m	1
78	ON/OFF Switch	KJD12	1
78-S1	Screw	St 3.5 x L10	2
105A	Switch Box	BKJD	1
105B	Switch Bracket	TC5	1
105C	Cable Glands	PG11	2
105-S1	Screw	St 4 x L20	4
105-S2	Screw	St 4 x L10	4